

Touch Manager

User instructions



Information

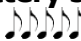
The system consists of a HSL lock (T4001 models) and a Dallas reader with a 9 volt battery connector for emergency power (p.n T4100). It's necessary to power the system through an alarm interface (p.n. T6006) or a battery box connected to the secondary connector of the lock.

The system allows the opening of the lock through the use of Dallas keys (maximum 50 keys).

The product is composed of three different Dallas keys:


- Blue key, programming key (p.n. N1971/TMB);
- Red key, reset key (p.n. N1971/TMR);
- User key (p.n. N1990 or N1982);

Low battery signal

Five beeps  indicates a low battery level. Replace the low battery immediately with a new alkaline/lithium 9V.


Acoustic signals

A double beep  indicates operation accepted.

A triple beep  indicates the key is already stored into the lock.

A long beep  indicates the end of a programming session.

A long bad sound  indicates the key is not enabled to perform the operation.

A single beep every second  indicates the lock is waiting for the second user Dallas key (dual mode).

Penalty

If set, after a certain number (8 by default) of attempts to place an incorrect key the lock starts a 4-minute penalty period. Each attempt to place a key within the 4 minutes penalty period restarts the count.

Dual Mode

Dual mode is set through a programming Dallas key specially configured for this usage (p.n. N1971/TMB/2). Dual mode requires two different user Dallas keys to open the lock.

MotorLock locks

MotorLock locks can be set in manual closing through a programming Dallas key specially configured for this usage. Regardless of the closing mode, with bolt open it's always possible to close the lock by placing a user Dallas key.

Opening

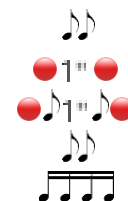
Place a user Dallas key on the reader. Double beep.

If programmed, the time delay count starts. The LED flashes every second.

A beep every second indicates the end of the time delay count.

Place again a user Dallas key on the reader. Double beep and the lock opens. Open the door.

A long bad sound indicates the key is not enabled to open.



Dual mode opening

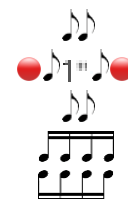
Place a user Dallas key on the reader. Double beep.

The reader beeps and LED flashes every second.

Place another user Dallas key on the reader. Double beep and lock opens. Open the door.

After 10 seconds of inactivity the dual mode opening session is automatically closed. Long beep.

A long bad sound indicates the key is not enabled to open.



Program/remove user Dallas keys

Place the programming Dallas key on the reader.

Touch Manager

A double beep indicates a programming session has begun and then, a triple beep every 3s indicates instead the programming session count (30s).

A long bad sound indicates that a key is not enabled.

Place a user Dallas key on the reader. A double beep indicates the key has been stored.

A triple beep indicates the key is already enabled and has now been removed.

Place another user Dallas key on the reader to enable the key or place the programming Dallas key to close the programming session.

After 30 seconds of inactivity the programming session is automatically closed. Long beep.



Reset all user Dallas keys

Place the reset Dallas key on the reader. Double beep. Wait few seconds.

Another double beep indicates the reset session has begun. Keep the key on the reader.

After 5 seconds a long beep indicates all the user keys have been removed.

A long bad sound indicates a key is not enabled.



Change programming/reset Dallas key

To be performed with lock open!

Connect the reset box (p.n. L4003/RB) on the secondary connector of the lock.

Place the new programming or reset Dallas key on the reader. A double beep indicates the new key has been stored.

Remove the reset box from the secondary connector of the lock.



Further information

For more information on the product's features, please visit www.tecnosicurezza.it

GLOBAL HEADQUARTERS
Tecnosicurezza SpA
Via Cesare Battisti, 276
37057 San Giovanni Lupatoto
Verona
Tel. +39 045 826 64 70
Fax. +39 045 826 64 69

USA HEADQUARTERS
Tecnosicurezza Inc.

website: www.usatecno.com
email: info@usatecno.com

SPAIN HEADQUARTERS
Tecnosicurezza Sa

website: www.tecnosicurezza.es
Email: info@tecnosicurezza.es

